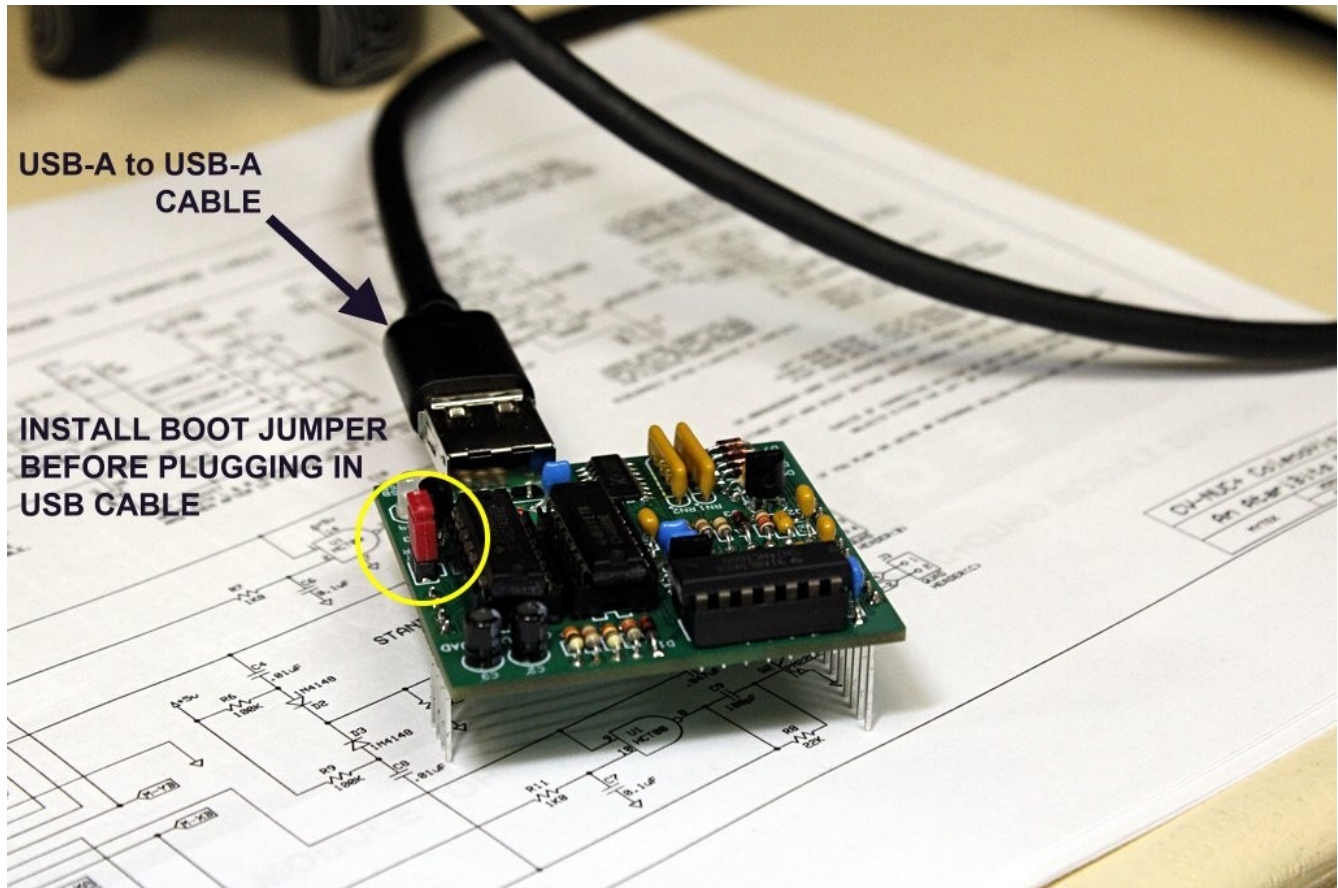
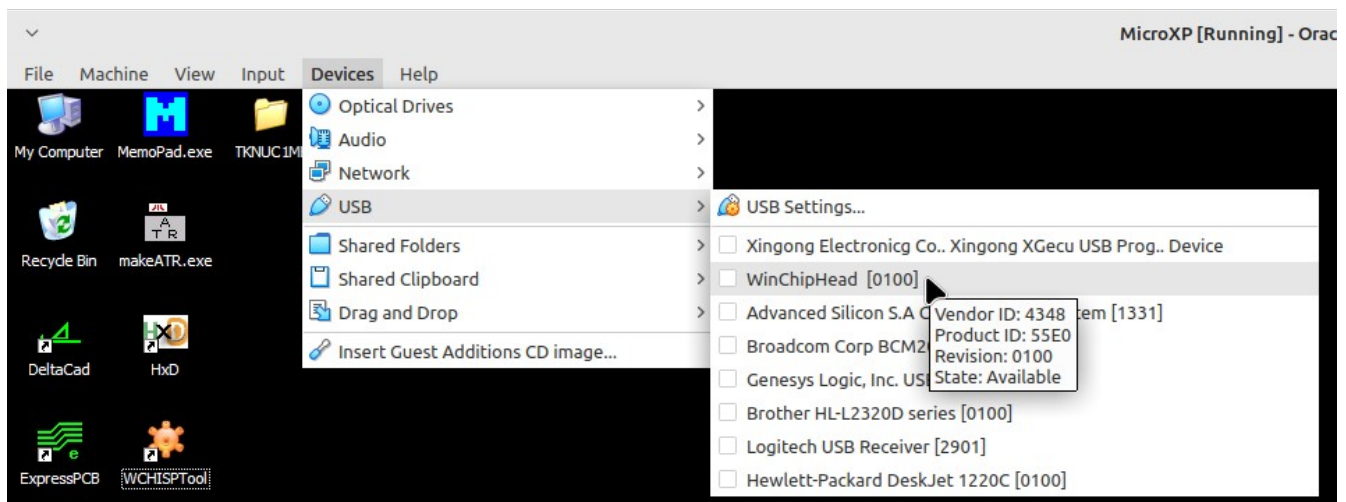


CH554G Firmware Flashing for the CV-NUC+QUAD board

You'll first need to install the Boot Jumper on the CV-NUC+QUAD board as shown below, and then plug in a double ended USB-A cable from the QUAD board to your PC.

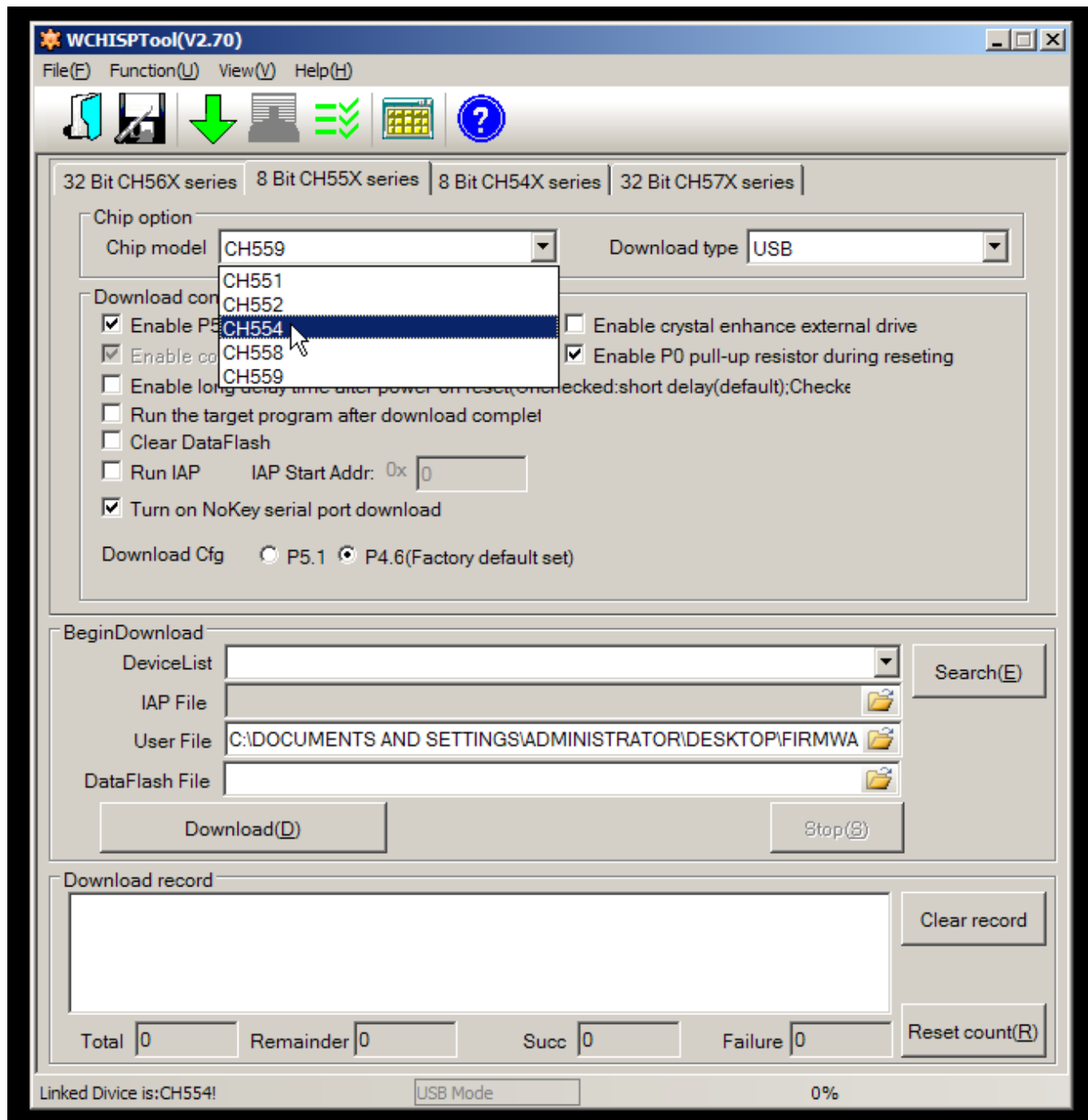


Now you'll need to run the WCHISP Tool program in either a Windows OS, or via a virtual client. If in Virtual Box, be sure to put a check mark under USB devices for the newly detected WinChipHead USB device (this is the CH554G chip on the QUAD board).

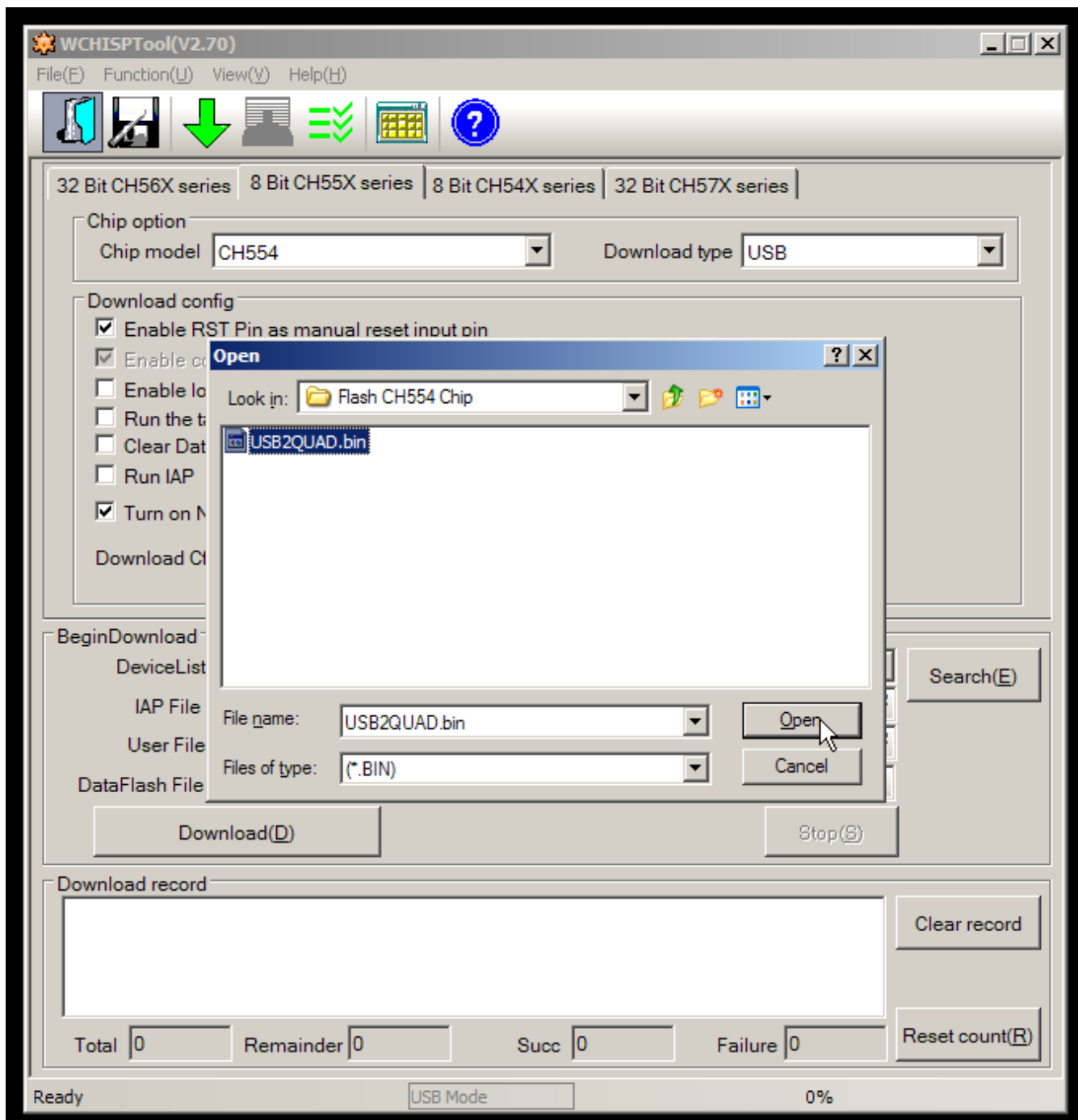


Using the WCHISP Tool Application

Select the CH554 device from the second TAB of the running WCHISP Tool application. Leave all the default selections as shown, there shouldn't be a need to change anything other than which device is to be programmed.



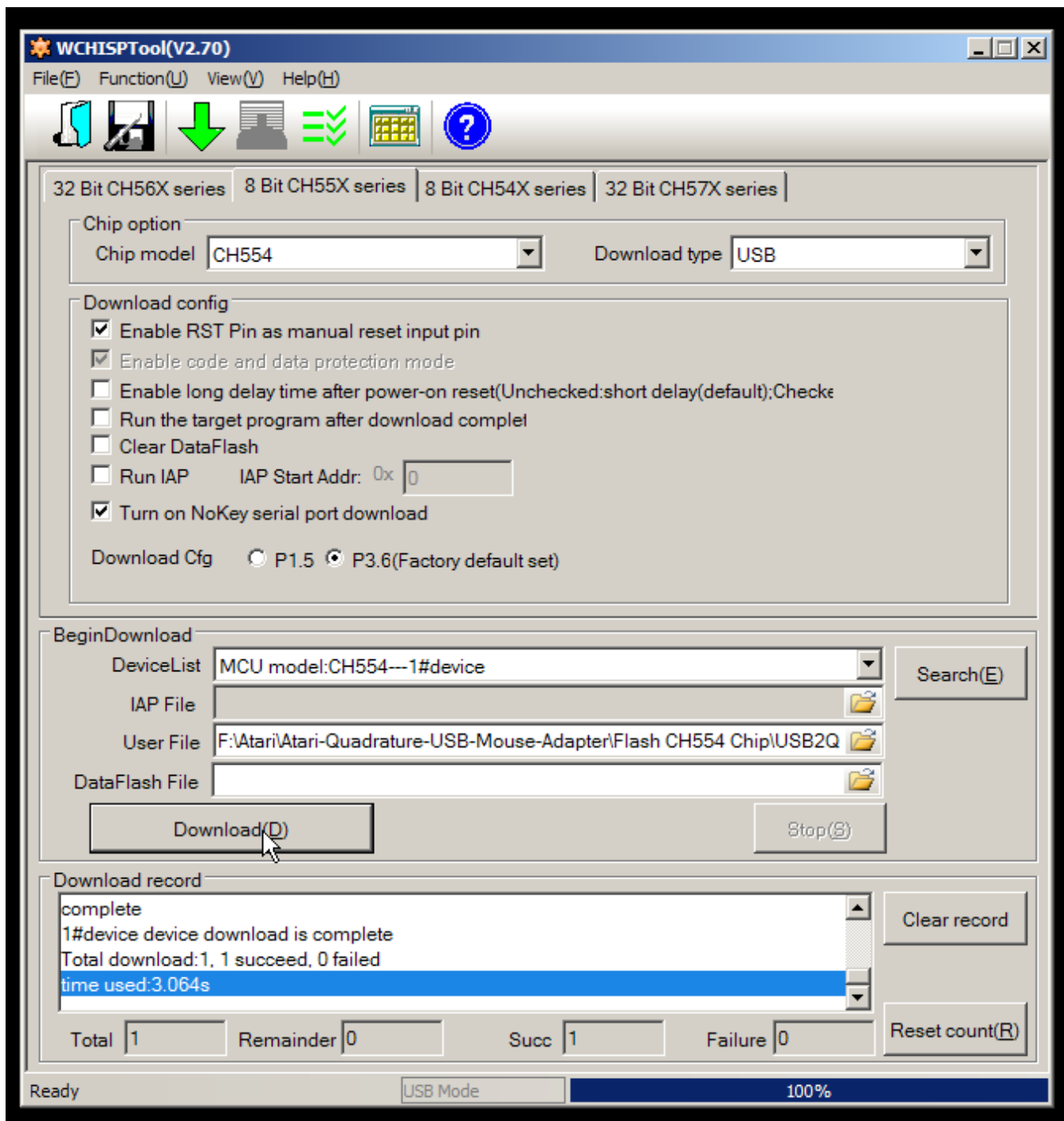
Next open the firmware file you wish to flash into the CH554G chip on the QUAD board. Be sure to select *.BIN in the File Type section.



And then press the Download button to begin the flashing process. This will go very fast, and should only take 15-20 seconds at the most.

During this time you will see various messages scrolling by in the Download Record window.

If all went well you should see a '1' next to the word succeed when the flashing has finished.



Now you can disconnect the CV-NUC+QUAD board from the USB cable, and remove the Boot Jumper.

Congratulations the board is now ready to be used, and can be plugged into the CV-NUC+ Main board. Have fun mousing around in any Roller-Controller compatible game.